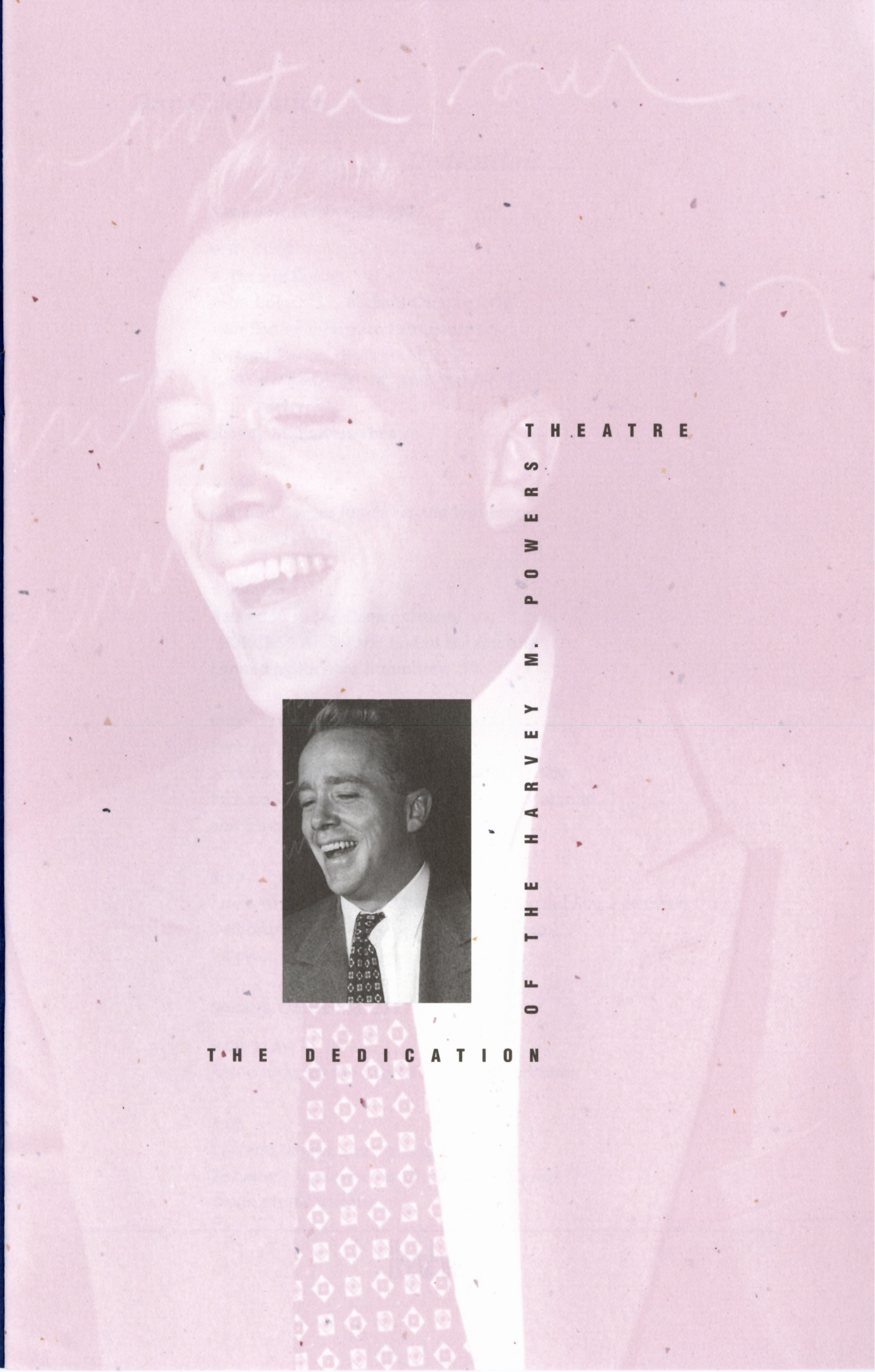


dedication  
and  
**celebration**

Bucknell





T H E A T R E

S

P

O

W

E

R

S

M.

H

A

R

V

E

Y

O

F

T

H

E

D

E

D

I

C

A

T

I

O

N



T H E D E D I C A T I O N



## *Our Celebration*



## *Dedication ...*

*Saturday, October 25, 1997*

9:30-11:00

A Theatre Forum

John Bolger '77, Barbara Campbell '78,  
Tom Fontana, Edward Herrmann '65,  
Richard Isackes, Rosa Joshi '87,  
Kathleen Kennedy '76, Andy Meyer '71,  
Marc Powers '74  
Harvey M. Powers Theatre

11:00

Cap and Dagger luncheon and tent party  
on Swartz Field

4:30-6:00

Reception in the Center Gallery.  
"FORCES: Art for the End of the Century"  
curated by Richard Humphrey, '74

6:00

Dinner, Terrace Room

A video tribute to Harvey Powers, directed by  
Richard Humphrey, and reminiscences by alumni  
and friends.

8:30

*Love Letters* featuring Edward Herrmann and Star Herrmann  
Dedication of the Harvey M. Powers Theatre,  
followed by a reception

*Sunday, October 26, 1997*

9:00-11:00

Association for the Arts Brunch, Terrace Room

2:00

Cap and Dagger and Company! present  
*The Actor's Nightmare* by Christopher Durang  
Tustin Studio Theatre



## Harvey M. Powers...

Bucknell was a detour from the path Harvey Powers, a young promising actor, had imagined for himself. His early love of acting fixed his heart on the goal of a career in theatre, but his exposure to dramatic literature in graduate school and his awakening to the harsh and tenuous nature of life for professional actors steered him due southeast when he finally chose his destination.

Harvey arrived at the portal of Bucknell's English department, toting in his baggage experience as a professional actor, director and even aspiring playwright, with his secret sequel to *Antigone* stashed among his effects. It wasn't so much what he found that inspired Harvey, but what he didn't find that set his mind afire with possibilities for what theatre arts at Bucknell might be.

In 1949, theatre was not a course of study at Bucknell. Plays were more an extracurricular activity than an outgrowth of classroom study. Mainstage productions had no home on campus. They were rehearsed in Bucknell Hall and produced there or in the Lewisburg High School auditorium. Student actors actually had to dash around the building, rain or shine, to make an entrance from the opposite side of the stage they had exited.

Harvey's presentation of the theatre as an "idea in action" brought a new dimension to the liberal arts curriculum at Bucknell, and a community of students intrigued by this more active approach to learning soon evolved around Harvey. So mesmerized by his enthusiasm were they, that they dubbed him "The Great Golden God," for his thick shock of blond hair was always at the center of their activity.

What he unearthed for those first students and thousands since was the idea of the living theatre as the embodiment of universal truths in flesh and blood. Here was an art in which the audience learns vicariously, just as the

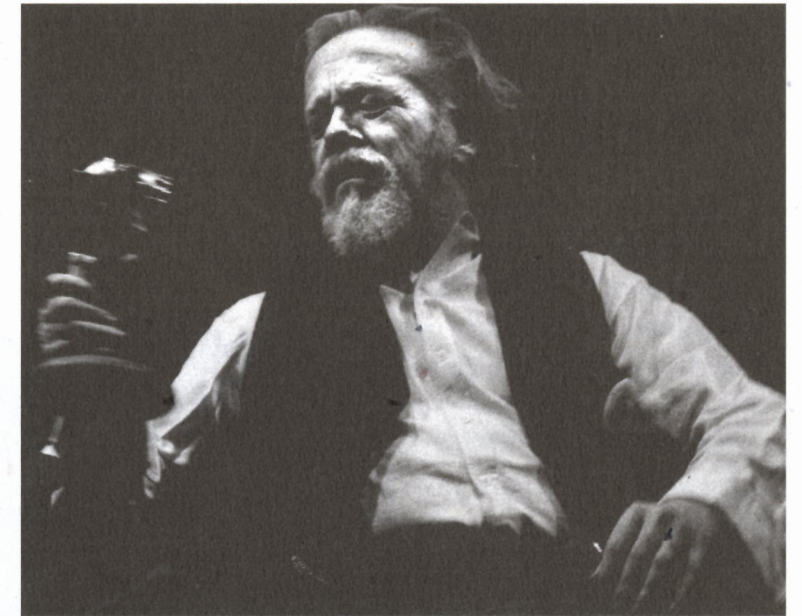
actor learns mimetically, what it's like to inhabit the world of another.

The idea stuck. Within his first ten years at Bucknell, with the help and support of C. Willard Smith, Harvey introduced theatre courses into the English curriculum and staked a home for the theatre program in Coleman Hall, where the University's first

proscenium stage was built in 1959.

The growth of the theatre program became an example of an "idea in action," or more appropriately perhaps, a creative vision made real. Eventually, a full range of studio courses in acting, directing, and design grew along with courses in literature and history of theatre, giving theatre students a solid professional foundation. The program was first offered as a special concentration area for English majors and, in 1979, became a full major in theatre. In 1985, in his last year of teaching, Harvey saw theatre arts step out of the wings and onto the full stage of recognition as a department of its own.

Alumni warmly remember parties and conversation at 20 South Water Street that nurtured their growth



*Krapp's Last Tape*, 1973. Performed by Harvey M. Powers

at Bucknell and beyond with Harvey and his partner and wife Betsy.

Today, we celebrate our good times with Harvey on this stage. We remember his warmth and humor, that unmistakable chuckle from seat H 114. Most importantly we remember how we have grown as artists through his teaching and his masterful direction and as individuals through his friendship. There is no more appropriate honor than to name this place where he shared his art and life with us: The Harvey M. Powers Theatre.



## The Legacy...

*A new era began in 1987*

*as dance was added*

*to the newly launched*

*theatre department.*



Bucknell Dance Company in *Soaring* by Ruth St. Denis and Doris Humphrey, reconstructed by Yun-yu Wang, 1992.

## Our Theatre...

Now in its thirty-eighth year of operation, the newly renovated Harvey M. Powers Theatre emerges once again as a state of the art academic performing arts facility. Following a master plan developed by Robert Lorelli and Associates in consultation with the theatre and dance faculty, Bucknell University has committed to a multi-year, multi-phase renovation process that extends beyond the immediately apparent rich oak panelling, cherry ceiling, comfortable seating, and improved acoustics to the pulse of the theatre as an artistic and educational center.

The auditorium renovation maintains the spirit of the excellent original design but incorporates acoustical panels and new and improved ceiling and side lighting positions. Onstage, the safety of our students has been assured by the upgrade of the counterweight system and installation of a weight rail. Stage equipment includes a new dark cherry velour act curtain and valence, a full stage white rear projection screen, and new dance marley.

Heath Hansum's design of the lighting and sound systems for the Harvey M. Powers Theatre boasts the latest advancements in theatre technology. The new lighting system with its Electronic Theatre Controls Obsession 600 control console features a computer network which allows our designers and operators to remotely design and





*Scapino! 1984.*  
Directed by Harvey M. Powers.  
Scene and costume design by  
Elaine Williams.  
Lighting design by Steven Chene.

control the lights from a number of computer stations in the theatre. This new system completely replaced wiring, control systems, and much of the instrumentation with digital equipment that can record over 1000 cues as well as a number of mechanical devices such as smoke machines, motors, and automated lighting. The 380 new dimmers offer advanced feedback capabilities that can tell the operator almost everything about them including temperature, input voltage, and current load. The dimmer will even warn the operator if it senses a burned out lamp. The lighting system uses computer processors which can

share information with our desktop computers loaded with sophisticated set, light, and sound design software. Our new sound system utilizing Roland, Rane, Bose and Electro-voice sound equipment allows MIDI show control and nondestructive computer editing of sound files.

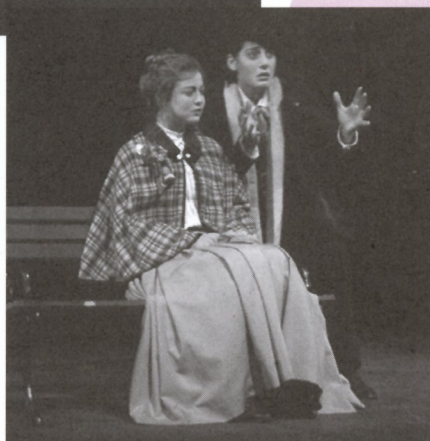


*Marat/Sade, 1971.* Directed by Harvey M. Powers. Musical direction by Rudolph Palmer '73.  
Scene design by James D. Lyon, Jr. Lighting designed by Roger Geer '72.





*The Singular Life of Albert Nobbs, 1992*  
Directed by Gary Grant  
Scene design by Elaine Williams  
Costume design by Eileen Marks Lloyd '88  
Lighting design by Stephen Draheim



*Love for Love, 1997*  
Directed by Robert Gainer  
Scene design by Elaine Williams  
Costume design by Karen Anselmo  
Lighting design by Heath Hansum



*First Blush, 1996.* Choreographed by Danna Frangione and Er-Dong Hu.

With the final phases of the renovation of our teaching and production facility in the coming years, the theatre and classrooms will become fully accessible to our students with disabilities. A more flexible orchestra pit cover, forestage extension, and freight lift will be installed. The costume shop will be relocated out of our dressing rooms into a space of its own and scenic and property shops will be upgraded. The rigging system will be overhauled by adding height to the stage house and building a grid which will allow rigging flexibility and frequent safety inspections.

We gratefully acknowledge Heath Hansum's contribution as site manager and contributing designer for the renovation. It is through Heath's expertise and attention to detail that the plans for this remarkable facility have been realized.





Opening Performance in the University Theatre.

*Kiss me Kate, 1959*

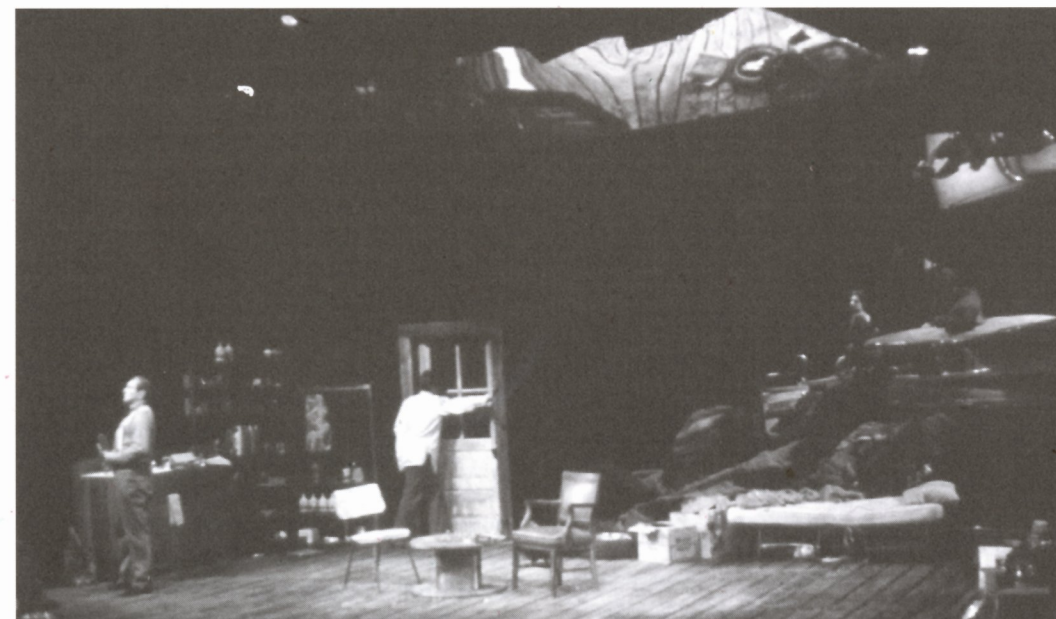
Directed by Harvey M. Powers

Designed by George Hersey

Musical Direction by Robert E. Beckman

Choreography by Joan Moyer

Lighting by Mark B. Peterson '60



*Chevy Death* 1983. Written by W. David Hancock '84. Directed by Harvey M. Powers. Scene and costume design by Elaine Williams. Lighting design by Stephen Chene.



*Crimes of the Heart, 1985.* Directed by Harvey M. Powers.  
Scene design by Peter Wert '86. Costume design by Elaine Williams.  
Lighting design by Stephen Chene.



# Love

## Love Letters

by A.R.Gurney

ANDREW MAKEPEACE LADD III  
Edward Herrmann

MELISSA GARDNER  
Star Herrmann

*There will be one ten minute  
intermission.*

### Director's Notes:

*Love Letters* concerns two star-crossed children of privilege whose struggle to grow and make sense of their rarefied world is acted out primarily in letters. Their world gradually disappears and their paths take different courses, but the letters they write to one another keep them intimately bound their whole lives through.

A. R. Gurney is sometimes mistakenly dismissed as an exclusively WASP writer, a writer for and about a world that doesn't matter. Nothing could be further from the truth. That he works with the people and materials of his own background is undeniably true. So did O'Casey. So does Neil Simon. That his characters speak in complete sentences and have notions of probity, rectitude and honor does not make them incapable of feeling deeply. In fact, under the charm and gleam of Gurney's world we are, unexpectedly, shaken to the depths of our broken hearts. *Love Letters* is a superb and moving play. E. H.

## EDWARD HERRMANN '65

Edward Herrmann's career began here at Bucknell University with Harvey Powers. Harvey's skill and wisdom set him on a path to the Dallas Theatre Center, a Fulbright Scholarship to the London Academy of Music and Dramatic Art, and then to New York City where he began a career that now spans over thirty years in the theater, films and television. He has established himself as a leading actor on Broadway where he won a Tony for *Mrs. Warren's Profession*, a Theater Guild Medal for *Plenty*, and just this year a Drama Desk Nomination and a Theater Guild Award for *Psychopathia Sexualis*. He has appeared as well in repertory theaters around the country including twelve seasons in leading roles at the Williamstown Theater Festival. He has appeared in over fifty films including *Civil Action* (currently in production), *Nixon*, *The Soul of the Game*, *Richie Rich*, *Lost Boys*, *A Foreign Field*, *Overboard*, *Reds*, *The Great Waldo Pepper* and *The Paper Chase*. His television work has earned four Emmy nominations and the T.V. Critics Circle Award for his portrayal of Franklin Roosevelt in *Eleanor and Franklin* and *Eleanor and Franklin: The White House Years*. He was also seen as Lou Gehrig in *A Love Affair: The Eleanor and Lou Gehrig Story*, Alger Hiss in *Concealed Enemies* and Mr. McCabe in *St. Elsewhere*. He is currently filming The Hallmark Hall of Fame's production of Anne Tyler's novel *St. Maybe*. Mr. Herrmann also hosts *Our Century* for the History Channel and for the past five years he has been the spokesman for the Dodge Division of Chrysler Corporation.

*Love Letters* is familiar territory to Mr. Herrmann having performed the play in Boston, Washington D.C., Chicago, New York and Williamstown. He is delighted to tread the boards for the first time with his brilliant actress, wife and mother of three, Star.

This performance is dedicated to the memory of his teacher and friend, Harvey Powers.

# Letters

## STAR HERRMANN

Star Herrmann attended the University of Texas at El Paso on a music scholarship for the cello and later attended Brigham Young University on a Drama Scholarship where she won the national college award for best actress at the Kennedy Center.

She has performed in numerous regional theatres and for over eighteen years has been a perennial favorite at Robert Redford's Sundance Summer Theatre. Among many are theatrical roles she has been seen in *Our Town*, *The Skin of Our Teeth*, *After the Fall*, *Shadow Box*, *The Sea Gull*, *The Man Who Came to Dinner*, *She Stoops to Conquer* and *The Merchant of Venice*. She has been a stalwart of its musical theatre where she has appeared in over one hundred productions, including *Annie*, *Gypsy*, *Big River*, *Oklahoma*, *The Robber Bridegroom*, *The Mystery of Edwin Drood*, *Guys and Dolls*, *Into the Woods*, *Meet Me in St. Louis*, *The Unsinkable Molly Brown*, and *Fiddler on the Roof*. Her film and television credits include *Under the Waterfall*, *Wind Runner*, *Slaughter of Innocents*, *The Man with Three Wives*, *Bitter Markings*, *In the Blink of an Eye*, *Evita*, *Nora's Gift* and *Hollywood Detective*. She is also the proud mother of three children and lives with her husband in Connecticut. Star is honored to be a part of this dedicatory celebration for Harvey Powers who has meant so much to so many here at Bucknell.

### THE DEDICATION

DEDICATION OF THE  
HARVEY M. POWERS THEATRE

### WELCOME

Elaine Williams and  
Kathleen Kennedy '76

### PRESENTERS

John Bolger '77 and  
Barbara Campbell '78

### THE DEDICATION

William D. Adams,  
President of Bucknell University

Marc Powers  
speaking for the Powers family

*You are invited to a reception in  
the lobby of Coleman Hall follow-  
ing the Dedication to greet the  
Powers family. You may also join  
members of Cap and Dagger on  
stage for backstage tours of our  
facility.*



## Love Letters PRODUCTION PERSONNEL

Lighting Designer and Technical Director	Heath Hansum
Production Coordinator	Elaine Williams
Stage Manager	David Carpenter '00
Assistant Stage Manager	Sandie Pisieczko '00
Master Electrician	Rich Dionne '96
Light Board Operator	Todd Ross '98
Sound Operator	Lindsey Resenberg '99
Properties	David Carpenter '00, Sandie Pisieczko '00
Campus Publicity and Box Office	Krista McCabe '01, Molly Ellis '98 Jason Seymour '00, Christin Smith '98
House Manager	Jenn stoll '99
Ushers	Megan Charles '99, Melanie Taylor '99, Meghan Sommers '99 Amy Gilday '00, Karen Forgione '99, Kristin Martinelle '99 Ted Burnes '00, Randy Faust '98
Archival video of the Dedication Events	Hoodwink and Hooley Roger Acosta

## DEDICATION PLANNING

*Coordination of the Dedication Weekend*  
Kathleen Kennedy and Elaine Williams

*Dedication Planning Committee*  
Dennis Baumwoll, Bill Boswell, David Carpenter '00, Danna Frangione,  
Chris Fry, Bob Gainer, Gary Grant, Linda Greenberg '63,  
Heath Hansum, Richard Humphrey '74, Er-Dong Hu, Richard Johnson,  
Kathleen Kennedy '76, Jane Maas '53, Miranda McGinnis '68,  
Betsy Powers, Jeremy Walker '00, Elaine Williams

*Administrative Assistance*  
Christine Fry, Leanne Leer '00  
Scott Kachmarik and Robynn Thompson  
Alumni and Constituent Relations

*Harvey Powers Video Tribute*  
Directed by Richard Humphrey '74  
Edited by Roger Acosta and Richard Humphrey '74

## THE DEPARTMENT OF THEATRE AND DANCE

Danna Frangione, director of dance	Technique and theory
Robert Gainer, director of theatre	Acting and directing
Gary Grant, chair	Theatre history, theory, directing
Allyson Green	Adjunct Instructor, dance
Heath Hansum	Technical direction, lighting
Er-Dong Hu	Dance technique and theory
Elaine Williams, director of scenography	Design
Laurie McCants	Adjunct Instructor, theatre
Christine Fry	Secretary
Pam Miller	Costumer
Alison Walker	Costume Intern

## CAP AND DAGGER OFFICERS

Executive Board/Officers

Megan Charles '99	President
Todd Ross '98	Vice President
Karen Forgione '99	Secretary
Randy Faust '98	Treasurer
David Carpenter '00	Educational Theatre
	Company chair
Amy Gilday '00	Activities Chair
Sandie Pisieczko '00	Faculty Liaison
Ted Burnes '00	Publicity Chair

## BUCKNELL DANCE COMPANY OFFICERS

Carla Christy '98	President
Sharon Meeder '98	Vice President
Natale Kolcun '98	Secretary
Allissa Moore '99	Treasurer
Lauren Rabadeau '99, Meg Frye '98	Activities
Chrissy Carter '99	Alumni Relations



## Our Participants...

**JOHN BOLGER '77** - is an actor in New York and founding member of the Willow Cabin Theatre Company. He is also a member of the Actor's Studio. He was seen last April at the Old Globe Theatre in San Diego in a production of Tom Stoppard's *The Real Thing*. Other theatre credits include *Richard III* at Hartford Stage, *Light up the Sky* at Roundabout Stage, *Lady from Maxim's* at the Huntington Theatre, *Antony and Cleopatra* and *Comedy of Errors* also at the Old Globe, and *Macbeth*, *As You Like It*, *A Midsummer Night's Dream*, *The Balcony*, *The Sea Plays*, and *Street Scene* with Willow Cabin. He has appeared in the television series *Everything's Relative*, *True Blue*, *New York Undercover*, *Almost Golden: The Jessica Savitch Story*, *N.Y.P.D. Blue*, as well as *The Guiding Light* and *Another World*. Films include *Parting Glances* and *Loose Cannons*. John is also grant assistant at The Howard Gilman Foundation in New York City and is currently an artist in residence at The Circle in the Square Theatre School performing in a production of *A Midsummer Night's Dream*.

**BARBARA CAMPBELL '78** began her career in musical theatre as an actress performing in summer stock and dinner theatre productions throughout the Northeast. She has written more than a dozen musicals for children which have been published and produced throughout the United States. A full-length musical for adults for which she wrote the lyrics was produced at the Westchester Broadway Theatre in Elmsford, New York in 1988 and 1996. Her musical adaptation of Kate Chopin's novella *The Awakening* was a finalist in the 1997 Festival of Contemporary Musical Theatre in Pasadena, California. A staged reading of her musical adaptation of Thomas Hardy's *Far from the Madding Crowd* was presented in New York City in Spring, 1996. Her choral pieces have been published by Theodore Presser, Warner/Chappel Music, Belwin Mills, and Coronet Press. Her *Cantata for an Urban Maiden* has been performed throughout the United States and her songs have been performed as part of Lincoln Center's "Meet the Artist" series. With composer Byron Janis, she wrote "A Hero's Passing By," the theme from the TBS television special *Gary Cooper: American Life, American Legend*. Barb is a member of ASCAP and The Dramatists Guild. She has just com-

pleted her first novel, a work of historical fiction set in Dark Age Scotland which draws upon Celtic mythology and the Pect/Wita tradition.

**TOM FONTANA** is executive producer of *Homicide: Life on the Street*, the award-winning hour-long dramatic series on NBC, and of *Oz*, HBO's first hour long drama series. He earned the 1993 Emmy Award in the category of Outstanding Individual Writing for a Drama Series, two Writer's Guild Awards, two Peabody Awards and three Television Critics Awards for his work on *Homicide*. As writer/producer on *St. Elsewhere* for five years, Mr. Fontana was honored with two Emmy Awards, The Peabody Award, The Humanitas Prize and The Writer's Guild of America Award, among others. He also received the Distinguished Alumni Award from his alma mater, Buffalo State College. Continuing his working relationship with his *St. Elsewhere* mentor, Bruce Paltrow, Mr. Fontana served as executive producer and writer on the series *Tattinger's* and *Home Fires*. He wrote the ABC special *The Fourth Wiseman*, which starred Martin Sheen and Alan Arkin. Mr. Fontana has had numerous plays produced in New York, where he lives, and at San Francisco's American Conservatory Theatre, The Cincinnati Playhouse in the Park, The Buffalo Studio Arena Theatre, Williamstown Theatre Festival and McCarter Theatre Company. He is a member of the Dramatists Guild, the Authors Guild of America and the Writers Guild of America.

**RICHARD HUMPHREY '74** is President of Creative Affairs for MasterVision International, Ltd. As an independent producer, his entertainment industry credits include numerous productions On and Off Broadway, most notably the original Pulitzer Prize winning production of *Buried Child* by Sam Shepard. His international accomplishments began when he was chosen by the American government and International Theatre Institute and sent to Bucharest, Romania to negotiate and to produce the first U.S./Romanian cold war cultural exchange, the American tour of the world renowned Bulandra Theatre Company. In 1986, he founded Humphrey Fine Art which represents an international roster of artists in exhibitions and museums throughout the world. His realization that the arts and emerging technol-

ogy could share a promising future resulted in his curation of "FORCES: Art for the End of the Century," a critically acclaimed exhibition of artists using non-traditional materials of basic life forces — light, time, planetary motion and technology, which was the centerpiece of the 1995 Cleveland Bicentennial and is continuing in its 2nd year touring America's top museums. "FORCES" is the focus of a ground-breaking campus wide exhibition and semester long interdisciplinary colloquy that explores the intersection of art and science at Bucknell University.

**RICHARD M. ISACKES** has extensive scene design experience in both regional theatre and opera. He has twice been the recipient of the Boston Circle Critics award for best scene design for his productions of *Translations* and *Uncle Vanya* at the Huntington Theatre of Boston, Massachusetts. A partial listing of other companies where his work has been produced include: The Opera Theatre of St. Louis, Chicago Lyric Opera, Alabama Shakespeare Festival, Cincinnati Playhouse in the Park, The Hartman Theatre Company, La Mama, Boston Lyric Opera, and the Charles Playhouse. Formerly a member of the faculties of Bucknell University, Boston University and the University of Illinois, where he was named to the College of Distinguished Scholars, he currently holds the Joanne Sharp Crosby Chair in Design and Technology at the University of Texas at Austin where he headed the Design and Technology Area for the Department of Theatre and Dance for six years. While at Texas Mr. Isackes served as Associate Head of the Performing Arts Center and is currently acting as the Producing Artistic Director for the Department's production program.

**ROSA JOSHI '87** has directed at New City Theater and Cornish College for the Arts in Seattle. She is currently the Project Coordinator for Northwest Asian American Theatre's International Artist Collaboration. Ms. Joshi was Resident Director at New City Theater from 1995 - 1997 and Artistic Director of New City/Second Company from 1996 - 1997. While at New City, she was nominated for, and received, a Princess Grace Directing Fellowship, a national award that supports resident artists in theater companies. For the Second Company she directed the inaugural production of the Outdoor

Shakespeare Program, *Twelfth Night*; Caryl Churchill's *Fen*, Doug Wright's *Watbanaland* and *Much Ado about Nothing*. Also at New City, she produced an International Theater Film Festival featuring the work of Robert Wilson, Merce Cunningham, John Cage and Ariane Mnouchkine. She was a faculty member and third year production stage manager at the Julliard School before attending Yale School of Drama for her M.F.A. in directing. She was assistant director for the Off-Broadway production of *Romeo and Juliet* at Theater for a New Audience directed by Bill Alexander. She also spent five seasons at Williamstown Theatre Festival where she was a 1991 Boris Sagal Directing Junior Fellow. Ms. Joshi's other directing credits include *Macbeth*, *Romeo and Juliet*, *The Rover* by Aphra Behn; *Whirlygig* by Mac Wellman, *Etta Jenks* by Marlene Mayer, *The Dumbwaiter* by Harold Pinter, *Bloody Poetry* by Howard Brenton, and *Ruffian on the Stair* by Joe Orton.

**KATHLEEN KENNEDY '76** was involved in many productions at Bucknell, both as an actress and as a director. Upon leaving the University after working as an Assistant to the Provost while studying for her Masters degree in Theatre, she attended Circle in the Square Professional Workshop and for the next 14 years she performed in N.Y. and in regional theatre companies. During her tenure as Managing Director for the Writers' Theatre in N.Y., she became associated with a number of TV writers and began writing herself for such shows as *Another World* and *Guiding Light*. In the past several years she has been nominated for four Writers' Guild of America awards and three Emmy awards for dramatic writing.

**ANDY MEYER '71** designed Bucknell's first financially successful concert series as an undergraduate, bringing to the campus artists such as James Taylor, Donovan, The Association, Gordon Lightfoot, and Peter, Paul, and Mary. In 1971 he joined A & M Records and became Director of Marketing, promoting such stars as Joe Cocker, Peter Frampton, and the Carpenters. In 1981 he created A & M Films and produced numerous films, including *Birdy*, *Blaze*, and *House of Cards*. He left A & M in 1986 to become president of Robert Redford's Wildwood Productions and worked on *The Milagro Beanfields* and *Promised Land*. He subsequently became president of Norman Lear's new Motion Picture Division



for Act III Communications producing *Breaking In* and *Fried Green Tomatoes*. Ultimately, he formed his own production company, Free Range Pictures, which is currently developing, among other projects *Young Men and Fire* (based on Norman Maclean's *A River Runs Through It*.)

**MARC POWERS '74** is Associate Professor of Theatre and Chair of the Department of Theatre and Dance at Winthrop University in South Carolina. Between Bucknell and Winthrop he pursued graduate study in theatre at Indiana University, taught at the Pennsylvania Governor's School for the Arts, became a member of Actor's Equity Association, was a member of the resident acting company of PAF Playhouse and taught for the Performing Arts Foundation of Long Island. He completed an MFA in Acting at Penn State, was a member of the resident acting company of the Camden (Maine) Shakespeare Festival, taught at the Ohio State University, and directed the Ohio Governor's School for the Arts. Marc continues to juggle the lives of a teacher, actor, director, administrator, and father. During this past year he taught courses in Voice and Movement for the Actor, Acting Styles, Directing, and Theatre Careers; presented papers and/or workshops for the Association for Theatre in Higher Education and the Southeastern Theatre Conference; performed the role of Dr. Dysart in *Equus*; directed productions of *The Rimers of Eldritch* and *Sassing the Sphinx*, led his department through accreditation by the National Association of Schools of Theatre and the National Association of Schools of Dance; and assisted in raising two teenage sons.

## The Department of Theatre and Dance...

**BOB GAINER** an M.F.A. graduate of the Yale School of Drama, has directed regionally at The Yale Repertory Theatre in New Haven, The American Place Theatre, Theatre at St. Clements, and TheatreWorks USA in New York City, The Peterborough Players, and at The Library of Congress. He has directed U.S. premieres of new works by both British and American playwrights. Bob has been increasingly seen on stage in several Bucknell theatre and dance productions, and has also performed with The Bloomsburg Theatre Ensemble, The Omaha Magic Theatre and The Mabou Mines Experimental Theatre Company. Previous to his twelve years at Bucknell, Bob has taught and directed at Smith & Hampshire Colleges, The Williamstown Summer Theatre Festival, The Hartford Stage Company and The Eugene O'Neill National Theatre Institute.

**ALLYSON GREEN** from El Paso, Texas, received a B.F.A. from Washington University in New York. Since 1986, she has performed with Bill Young, Randy Warshaw, Charles Moulton, Jose Navas, Rosalind Newman, Doug Varone and many others. Her choreography has been presented in a wide variety of venues in Belgium, Brazil, Canada, France, Portugal, Venezuela and the U.S. Allyson is also a visual artist in painting and graphic design.

**DANNA FRANGIONE** joined Bucknell in 1987 as the Director of Dance and offers classes in modern and jazz technique, dance composition, dance history and world dance. She holds a master's degree from Mills College and has served on the faculty at the University of Georgia, the University of Mississippi and South Dakota State University. Her choreography has been staged on companies in the U.S. and abroad, touring Asia, the Middle East and Australia.

**GARY GRANT** received his Ph. D. from University of Pittsburgh. His early theatre work with Jerzy Grotowski and Zbigniew Cyncutis of the Polish Lab Theatre has led to continuing interest and teaching in avant-garde performance. At the University of Puget Sound, his production of Sam Shepard's *Angel City* toured to the Kennedy Center as part of the American College Theatre Festival where he was awarded a prize for

Outstanding Direction. The Bucknell production of Shepard's *Tooth of Crime* under his direction won a regional ACTF award. Most recently, as part of Bucknell's Sesquicentennial Celebration and a kick-off event for the Powers Theatre Renovation Fund, he directed *Le Cafe Tustin*, a site for cabaret performances and mid 60's one acts performed by talented Bucknell alumni. Gary recently lectured on the Shepard/Wim Wenders collaboration *Paris, Texas* at a symposium on landscape and the cinema organized by Rabelais University in Tours, France. He has also developed the popular Sam Shepard Website, a collection of materials of all sorts on the playwright from Shepard fans, scholars and performers from around the world.

**HEATH HANSUM** has a M.F.A. in lighting design and technical direction from University of Iowa. Heath teaches computer-aided design and lighting and sound design and is a member of IATSE Local 636. While at Bucknell, Heath plans to build a curriculum in visual literacy with an emphasis in computer-aided design utilizing our new research and design lab. Recently, he was production manager for The San Francisco Opera for productions of *The Elixir of Love*, *The Aspern Papers* and *The Barber of Seville*. This summer and fall, Heath worked with BMI Supply installing performance rigging systems in New York and Pennsylvania. He serves as a sound engineer for the Williamsport Community Arts Center. Some of the work of Heath and his classes is on display in the main hallway outside the theatre.

**ER-DONG HU** dancer and choreographer, received his B.A. in Dance from Beijing Dance Academy where he was honored with a faculty position for the next eight years. After completing his M.F.A. at the University of Iowa, Er-Dong performed as a Principal Dancer with Dayton Ballet. He joined the faculty at Bucknell in 1994 and offers classes in ballet, Tai Chi and Chinese Traditional Dance. Recently returning from research in China, his latest choreography has been staged in companies in Ohio, Georgia and Taiwan.

**LAURIE McCANTS** is a founding member of The Bloomsburg Theatre Ensemble (BTE), where she has been an actor, a director (*Voice of the Prairie*, *A Child's Christmas in Wales*, and *Waiting for Godot* among others), a teacher and writer. She co-adapted *Alice's Adventures in Wonderland* with composer Kyle

Gann and scenographer/puppet designer Elaine Williams. This innovative production had its premiere at Bucknell with an ensemble of student performers. She has appeared as a guest actor at Pittsburgh's City Theatre, Lancaster's Independent Eye, Carnegie-Mellon's Showcase for New Plays, and The Public Theatre of Kentucky. She also performed in BTE's five-nation tour of Africa in 1991. She has served on the Theatre Panel for the Pennsylvania Council on the Arts, on the Board of Directors for the Theatre Association of Pennsylvania, and is an Approved Artist in the state Artists-in-Education program, through which she has conducted numerous residencies in area schools. A graduate of Carlton College and Northwestern University, Laurie teaches Introduction to Theatre and Acting I at Bucknell, and presents lecture-demonstrations and workshops for college and community groups.

**F. ELAINE WILLIAMS** joined Harvey as designer in the English Department's theatre program in 1980. Elaine feels fortunate to have had Harvey as both her colleague and her mentor. She designs extensively for the theatre and dance programs and teaches classes in the areas of scene and costume design and history. She has served as chair and as Director of Theatre for the Department of Theatre and Dance. Elaine is an Affiliated Artist with The Bloomsburg Theatre Ensemble and has also designed for The Georgia Shakespeare Festival, Horizon Theatre, Theatre in the Square, and Theatre Gael in Atlanta and Stage One: The Louisville Children's Theatre. During a recent two year leave from Bucknell, she has focused on her special interests in puppetry, masks, and designing interactive performance environments. Collaborations with directors at the Center for Puppetry Arts in Atlanta have produced several original adaptations from literary works. She designed set, costumes and puppets for the internationally acclaimed *Frankenstein*, adapted and directed by Jon Ludwig, and produced by the Center for Puppetry Arts for the Cultural Olympiad.



### Contributors...

*Bucknell University acknowledges the following contributors to the Harvey M. Powers Theatre Renovation Fund, the Harvey M. Powers Scholarship Fund, and to the Department of Theatre and Dance. The listing includes gifts received by October 6, 1997.*

Prof. Warren G. Abrahamson II  
Mr. Douglas K. Allchin  
Dr. & Mrs. A. Loren Amacher  
Mr. Matthew Andersen  
Ms. Kathryn Andrachio  
Dr. Susan A. Aoki  
Ms. Lisa B. Arbeiter  
Mr. Charles L. Arnao  
Avon Products Foundation  
Ms. Jennifer Banks  
Mr. Kenneth Barron  
Ms. Courtney Bear  
Mr. Richard G. Berggren  
Mrs. Mary J. Beringer  
Mrs. Patricia E. Bjorhovde  
Profs. Harry Blair & Barbara Shailor  
Mr. William E. Boswell  
Ms. Margaret L. Bryan  
Ms. Helen A. Bullwinkel  
Ms. Barbara Campbell  
Ms. Ruth B. Burnham and Prof. Wayne F. McDiffett  
The Campus Theatre  
C.G.S., Inc.  
Mr. Norman C. Chester  
The Rev. Raymond L. Coffman, Jr.  
Ms. Jennifer Collins  
Ms. Sue Comfort  
Mr. Wilfred B. Cunningham  
Mr. Bernard C. Curtiss II  
Dr. Kenneth H. Dangman and Ms. Rebecca G. Nisley  
Mr. Mark Danzi  
Ms. Renee DeSalvatore  
Ms. Alison Dickard  
Ms. Diane Dickey  
Mr. and Mrs. Manuel Duque  
Prof. Mills Edgerton, Jr.  
Ms. Kristen Elder  
Mr. and Mrs. Mark Elliott  
Mrs. Lucille J. Esposito  
Mrs. Janet P. Fagan  
Atty. & Mrs. Marc R. Feinberg  
Prof. Joseph Fell  
Profs. David and Pauline Fletcher  
Mrs. Barbara E. Frazer  
Ms. Heather Frenz  
Mr. & Mrs. Christopher Fronheiser  
Ms. Amy Gallagher

Ms. Marilyn A. Gardner  
Mrs. Mary H. Gardner  
Mr. Jeffrey L. Gaynor  
Ms. Joan E. Gemberling  
Mr. & Mrs. Edward Glassmeyer  
Ms. Sue A. Goddard  
Mr. G. Mitchell Goldman  
Prof. Anthony C. Gosse  
Mrs. Susan B. Graham  
Mrs. Linda I. Greenberg  
Mr. Douglas P. Grove  
Mr. & Mrs. Ed Gustafson  
Mr. Allen P. Haines  
Mr. Will Hancock  
Mr. George Hannah  
Mr. William Haut  
Mr. & Mrs. Harold W. Heine  
Mr. & Mrs. Monroe Herb  
Mr. Joel S. Herman  
Mr. Edward K. Herrmann  
Prof. & Mrs. Daniel Hoffman  
Ms. Faith Hunter  
Jeffco Enterprises, Limited  
Mrs. Marilyn H. Jackson  
Mrs. Gail D. James  
Ms. Christine Jerome  
Mr. James E. Johnson  
Ms. Victoria R. Juditz  
Mr. Marvin Kahan  
Mrs. Lois Kalp  
Ms. Dorris J. Keen  
Ms. Kathleen Kennedy  
Mr. Marc Kenny  
Ms. Diane M. Kerly  
Mrs. Sonia A. Kessler  
Mr. & Mrs. Allen Kinsella  
Mr. Richard A. Klein  
Mrs. Irene A. Kralick  
Ms. Frances Kramer  
Mr. Joseph LoGrippe  
Dr. Diane A. Lowe  
Mr. & Mrs. Robert L. Lyons  
Prof. Hulda Magalhaes  
Prof. David P. Marsh  
Prof. F. Martin  
Ms. Sandra R. Martin  
Mrs. Jane Brown Maas  
Ms. Virginia Mazer  
Prof. & Mrs. Richard G. McGinnis  
Mrs. Dorothy W. McRae  
Metamorphosis Performing Co.  
Mr. Ned A. Miller  
Mr. Leslie R. Moonves  
Mrs. Beverly J. Muto  
Mr. & Mrs. Geoffrey P. Mynott  
Mr. & Mrs. Richard J. Nelson  
Prof. Richard P. Nickelsen  
Mrs. Gwyn A. Nielsen

Prof. Sally E. Nyquist  
Mr. Terry A. O'Donnell  
Mr. & Mrs. Wm. O'Shaughnessy  
Ms. Kay R. Ocker  
Mr. Steven O'Hagan  
Mr. Rory O'Moore  
Prof. Karl W. Patten  
Ms. Jacqueline Paz  
Mr. Patrick J. Pedro  
Mr. Bruton R. Peterson  
Ms. Sharon A. Poff  
Mr. Charles R. Pollock  
Ms. Nannanne Porcher  
Ms. Lisa Poulin  
Mrs. Betsy K. Powers  
Mrs. Carol A. Powers  
Mr. Chuck Powers  
Robert L. Lyons and Associates  
Mrs. Helena A. Rivoire  
Mr. William Rogers  
Mr. & Mrs. Thomas Romanowski  
Mr. William J. Roos  
Mr. Buck Ross  
Ms. Bettyann L. Sade  
Mr. John Sauer  
Mr. & Mrs. Rodney L. Shrawder  
Prof. Matthew Silberman  
Mr. Milton H. Sleeter  
Prof. & Mrs. Wendell I. Smith  
Mr. & Mrs. Webster Smith  
Ms. Marybeth Sodini  
Prof. & Mrs. Gary A. Sojka  
Ms. Ellen Stancs  
Mr. & Mrs. Bruce A. Steinbach  
Ms. Mary Jane Stevenson  
Mrs. Lois G. Tilton  
Mrs. Alice M. Totten  
Mr. & Mrs. Max Vanbuskirk  
Ms. Lynn Vandelberg  
Mrs. Mina Hale Varney  
Mr. & Mrs. Sigfried Weis  
Ms. Allison Weiss  
Ms. Joan Wheatcroft  
Profs. John S. Wheatcroft and Katherine Wheatcroft  
Ms. Judith Wheeler  
Ms. Suzanne Wightman  
Dr. & Mrs. David H. Wilder  
Mr. & Mrs. Earl J. Williams  
Prof. Frances Elaine Williams  
Mrs. Ellen Winchester  
Ms. Janet E. Yeisley  
Mr. Lane F. Ziff

Bucknell Alumni Association  
Bucknell Association for the Arts



